

A lightweight, compact auto-braking descender for rope access and rescue designed for semi-static ropes ranging from 10-11 mm. Anti-panic function in the lever re-engages the cam if the handle is pulled too far where it could lead to unsafe descent speeds. The body and lever are made of robust hot-forged aluminum alloy.

Mechanical parts are made of precision-cast stainless steel. The internal mechanism and locking cam use an innovative design for smooth action on the rope which prevents rapid wear-and-tear and absorbs energy from small shocks with a slight amount of rope slippage. The fluid action on the rope also allows the Druid to function well for rope ascent. The cam can be de-activated with a trigger to allow quick sliding of the rope in situations with no load or limited load. Steel ring for attaching a keeper cord.

Standards:

- EN 12841/C as a descender of the working line for workers up to 120 kg; can also be used for rope access rescue up to 200 kg.
- EN 341/2A as an emergency evacuation device on a single line for workers up to 120 kg, 11 mm semi-static rope (Lithium 11 mm).
- EN 15151-1 for climbing structures using mountaineering techniques with dynamic ropes ranging from 9.9 to 11 mm.2



**DRUID BLACK
223201**

Ref.	Product name	Weight		Breaking load	Rope diameter		CE		STANDARD	Rescue use	EAC
		g	oz		Min - mm	Max - mm	EN 12841/C	EN 15151-1			
2232	DRUID	280	9.9	15	9.9	11	•	•	•	Max 200 kg	•
223201	DRUID BLACK										

- 1 Back Flange: hot forged aeronautic grade aluminum alloy for high strength and resistance to wear-and-tear.
- 2 Front Flange: hot forged aeronautic grade aluminum alloy with markings to indicate the proper direction for inserting the rope.
- 3 Attachment Hole: large diameter allows for complete rotation of a locking carabiner. The carabiner cannot be attached unless the device is completely closed.
- 4 Lowering Lever: hot forged aeronautic grade aluminum alloy and precision cast stainless steel with an ergonomic shape and double hinge for good leverage and control when lowering.
- 5 Fixed Cam: precision cast stainless steel for high strength and resistance to wear-and-tear. Also serves as a rope guide when lowering to limit contact between the rope and the aluminum side walls.
- 6 Mobile Cam: precision cast stainless steel with proprietary geometry that allows the cam to rotate into place alongside the rope. This makes the action very rope-friendly.
- 7 Cam Trigger: the small flange on the bottom of the Mobile Cam can be used to momentarily hold the cam open for paying out slack or to initiate a descent when there is a lot of friction.
- 8 Anti-Panic: a proprietary mechanical system that will cause the lever to automatically disengage and cause the cam to automatically reengage if it is opened too quickly, or if it is kept too far open where the speed of the descent can become unmanageable.
- 9 Rivets: Precision CNC stainless steel. The large diameter and precision pressing ensure exceptional strength and performance over the life of the device.
- 10 Hole to insert a cord for securing the device, preventing it from falling.

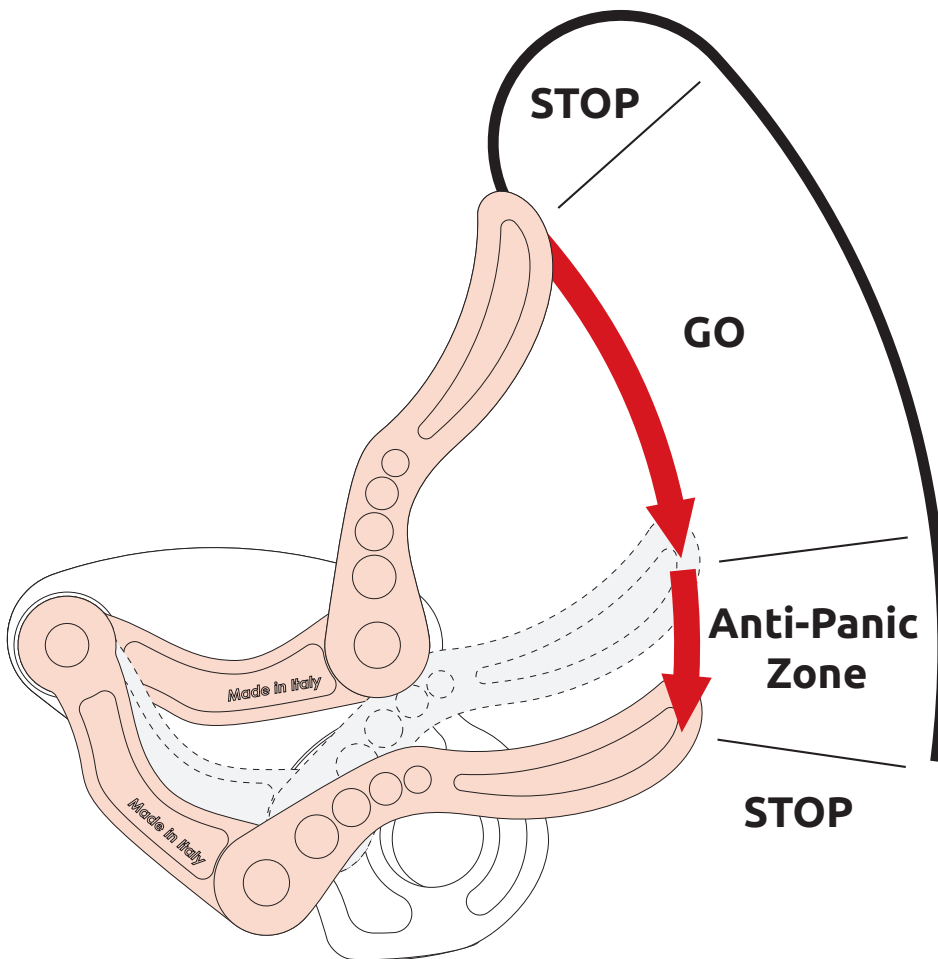


ANTI-PANIC SYSTEM (Patent pending)

When lowering, the proprietary Anti-Panic system helps prevent one of the most common accidents occurring with the use of an assisted-braking device -- losing control of the descent.

The brake lever will automatically disengage causing the cam to automatically reengage if it is opened too quickly or if it is kept too far open where the speed of the descent can become unmanageable.

This safety feature is particularly useful where there is little friction from rope drag between the belayer and the climber or during top-down descents where the Matik really delivers a remarkable sense of safety and control.



Rope compatibility

EN 12841C
 ● = EN 1891 Type A 10 ≤ Ø ≤ 11mm

EN 341/2A
 ● = EN 1891 Type A
 C.A.M.P. Lithium Ø 11mm ref.2240
 C.A.M.P. Iridium Ø 11 mm ref.2811

EN 15151-1
 ① = EN 892 Single 9.9 ≤ Ø ≤ 11mm

Working principles

A

B

C

Working principles

A DRUID

B DRUID PRO

Installation

A

B

C

Additional locking

Drop-proof cord

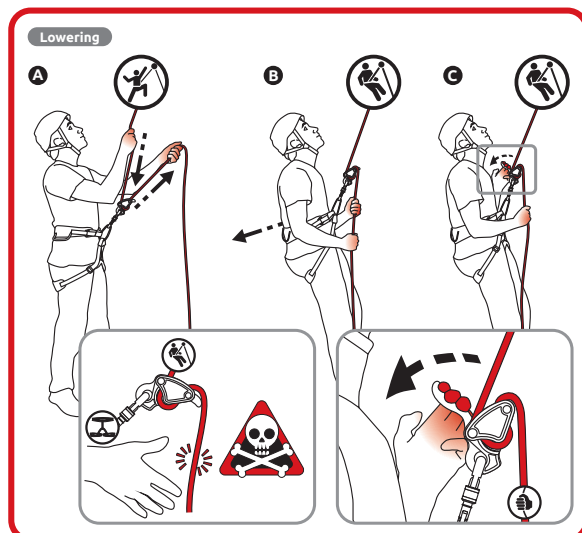
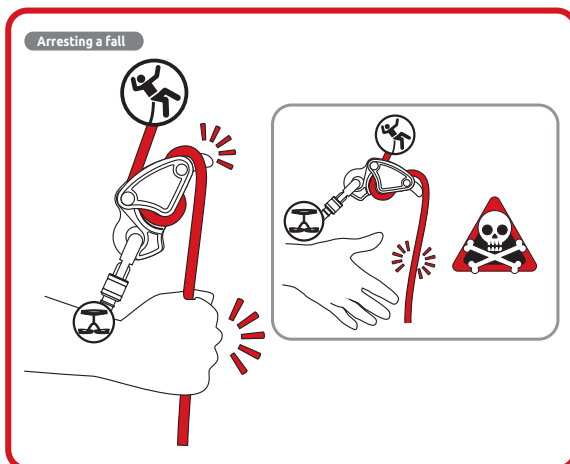
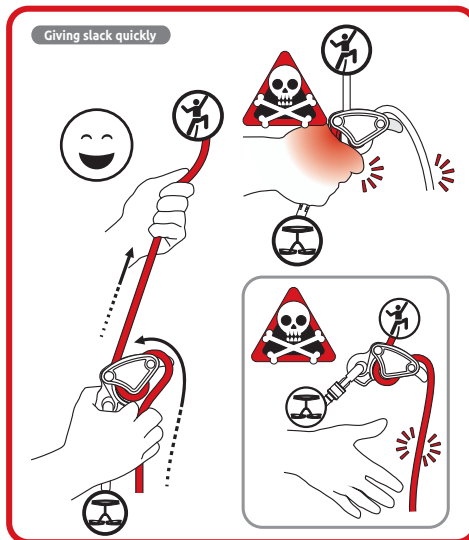
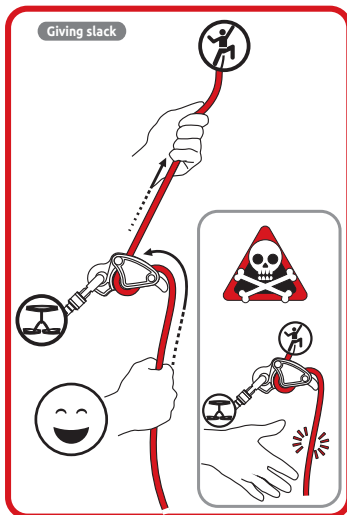
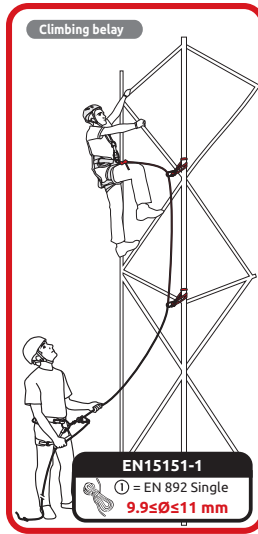
10 - 15 cm

DRUID

DESCENDER

Ref. 2232 - 223201

ROPE ACCESS, TREE CLIMBING, CONFINED, SELF RESCUE, TEAM RESCUE



DRUID

DESCENDER

Ref. 2232 - 223201

ROPE ACCESS, TREE CLIMBING, CONFINED, SELF RESCUE, TEAM RESCUE

